

EFG Izi

The flexible family



EFG Izi. Stationary and sit/stand in the same family.

Sit/stand desks might be the most popular choice when you invest in new workstations, but they are not always the optimum solution.

Is your job mobile, involving a lot of time away from the office? In that case, a stationary desk is a good alternative. It can also act as a complement to stand up/sit down desking.



EFG Izi

EFG Izi Niveau

EFG Izi Niveau is one of our products carrying the Nordic Swan ecolabel.



Lots of workplaces actually need both kinds of desks – and the possibility to switch from one to the other as circumstances change. Without the materials, colours and desktop designs sprawling in different directions.

That’s how the EFG Izi product family works. It features two stationary desks – EFG Izi and the new EFG Izi Effect – and EFG Izi Niveau, a motorised height adjustable desk.

New!
EFG Izi Effect





EFG Izi Niveau

EFG Izi Niveau is a range of sit/stand tables with T-bases and rectangular uprights. One of our most popular ranges, it also offers solutions if you want desks with a three-leg frame.

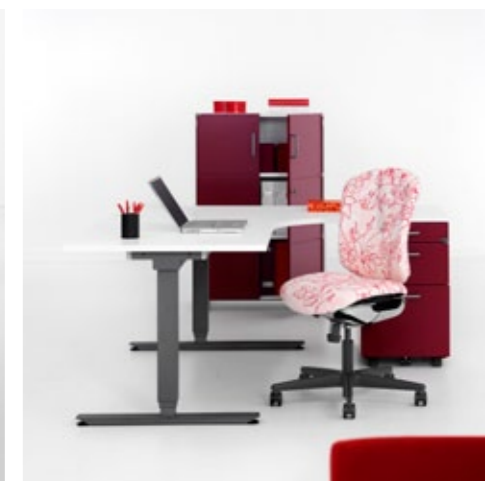
EFG Izi Niveau is a sit/stand table with no crossbeam to give you the best possible legroom when seated. Table tops are available with a straight or bevelled edge.





The height setting is motorised and continuously adjustable from 670 to 1170 mm. And if that isn't enough, you can get a 620 to 1270 mm setting as an option.

The frame is also adjustable – in length. A practical and economical solution if changes call for a larger or smaller table.





EFG Izi Effect

EFG Izi Effect is a new series of stationary desks resembling the stand up/sit down tables in the collection.

It's deliberate, of course. On the one hand, the design idiom in EFG Izi Niveau has already proved its appeal. On the other, it means you can combine both desk types, yet maintain that same familiar look. The desk features unusually generous height adjustment, from 610 to 900 mm.





The resemblance between EFG Izi Effect and the sit/stand table isn't just about the design idiom; it's a matter of the basic style to a great extent. The table tops are the same, available with straight or bevelled edges.

The frame features a T-base and rectangular uprights and there's no crossbeam to get in the way when you're sitting at your desk. The range also includes conference tables.

EFG Izi

EFG Izi is a functional, ergonomic and attractive desk with the usual extras incorporated as standard. The desk is available in three models: with a modesty panel, with a cable tray, and with the cable tray integrated in the modesty panel. EFG Izi has an L-shaped base, a visible difference compared to the other desks in the product family.

The table is height adjustable from 610 to 900 mm. EFG Izi works just as well as a standalone desk, as it does in group workstations.



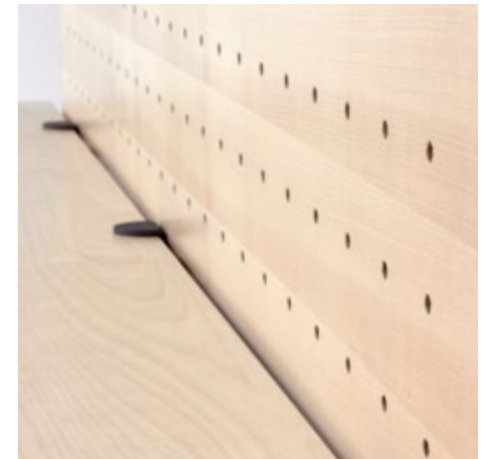
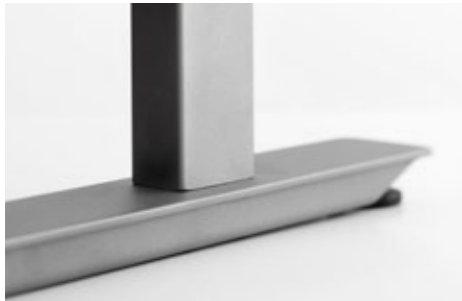
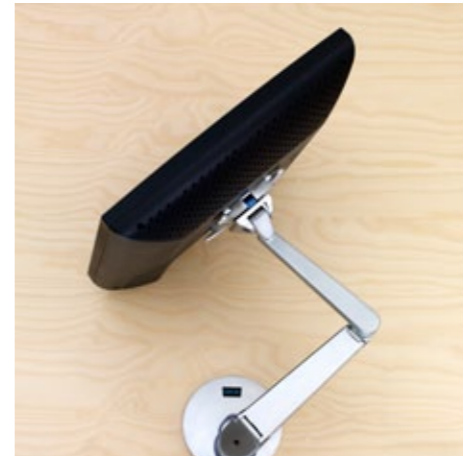


Table tops and accessories

Take your pick from an unusually wide selection of table tops – in shape, materials and colours. With or without access holes for cabling, with straight or bevelled edges. Table tops come in veneer and MFC. Frames are available in a dark grey metallic structure finish, or chrome. EFG Izi frames are also available lacquered with a black structure finish.

Naturally, this broad collection comes with a wide assortment of alternatives and accessories. These are just a few examples. To view the full range, visit our website www.efg.info, or give us a call.



www.efg.info



Scandinavian office furniture & design